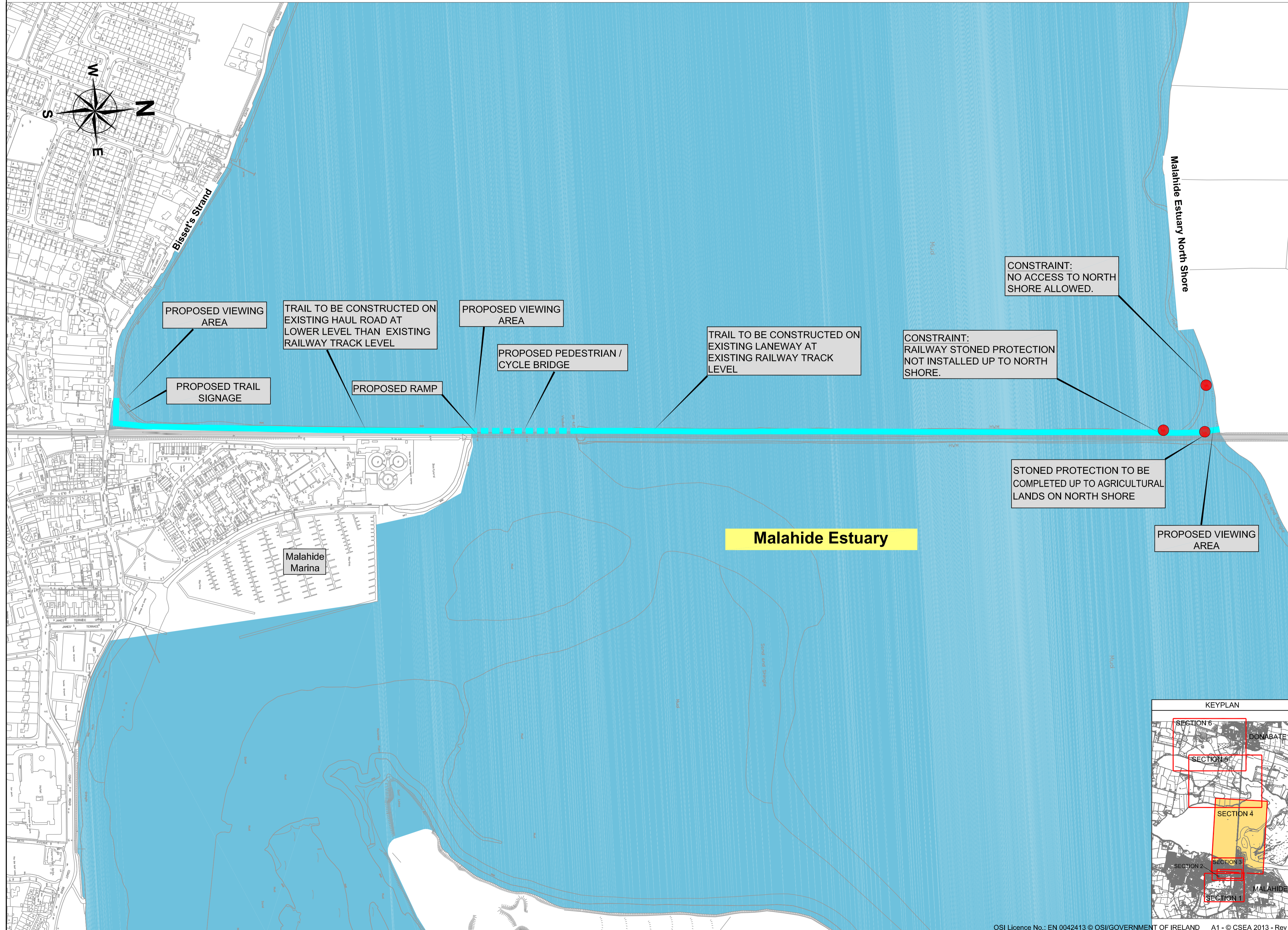


# Broadmeadow Way - Section 4

## Bissets Strand To North Shore Malahide Estuary



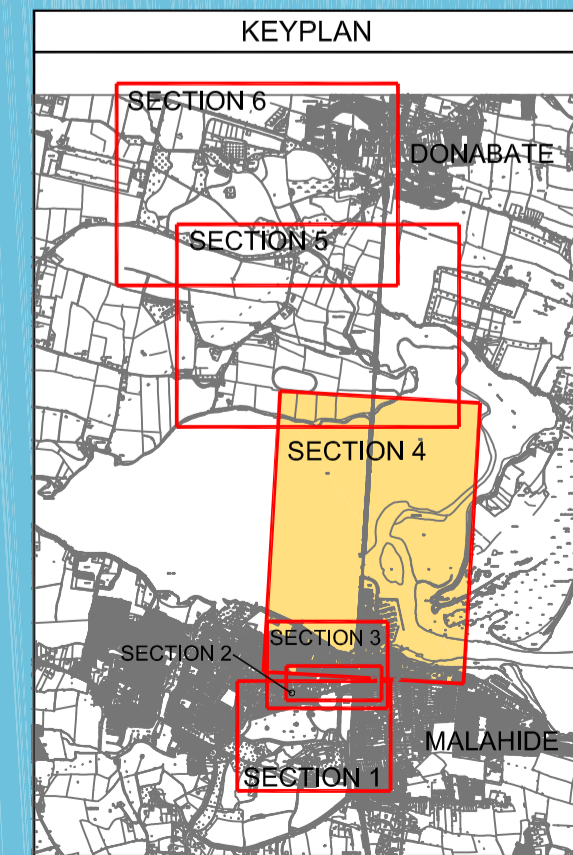
**Legend:**

Section 3 Option 1	
Local Constraints	
Malahide Estuary	

**Clifton Scannell Emerson Associates**  
18/12/2013  
Report  
CSEA

Revision	Description	Initials	Date

**Clifton Scannell Emerson Associates**  
Clifton Scannell Emerson Associates Limited  
Consulting Engineers,  
Seafort Lodge,  
Castledawson Avenue,  
Blackrock, Co. Dublin,  
Ireland.  
T. +353 1 288 5006  
F. +353 1 283 3466  
E. info@csea.ie  
W. www.csea.ie



Client	Fingal County Council		
Project	Broadmeadow Way		
Dwg. Title	ROUTE OPTIONS SECTION 4		
Drawn By	NH	Date	DECEMBER 2013
Checked by	NH	Scale	NTS @ A1
Dwg. Progress			
Dwg. No.	12_160_146		